

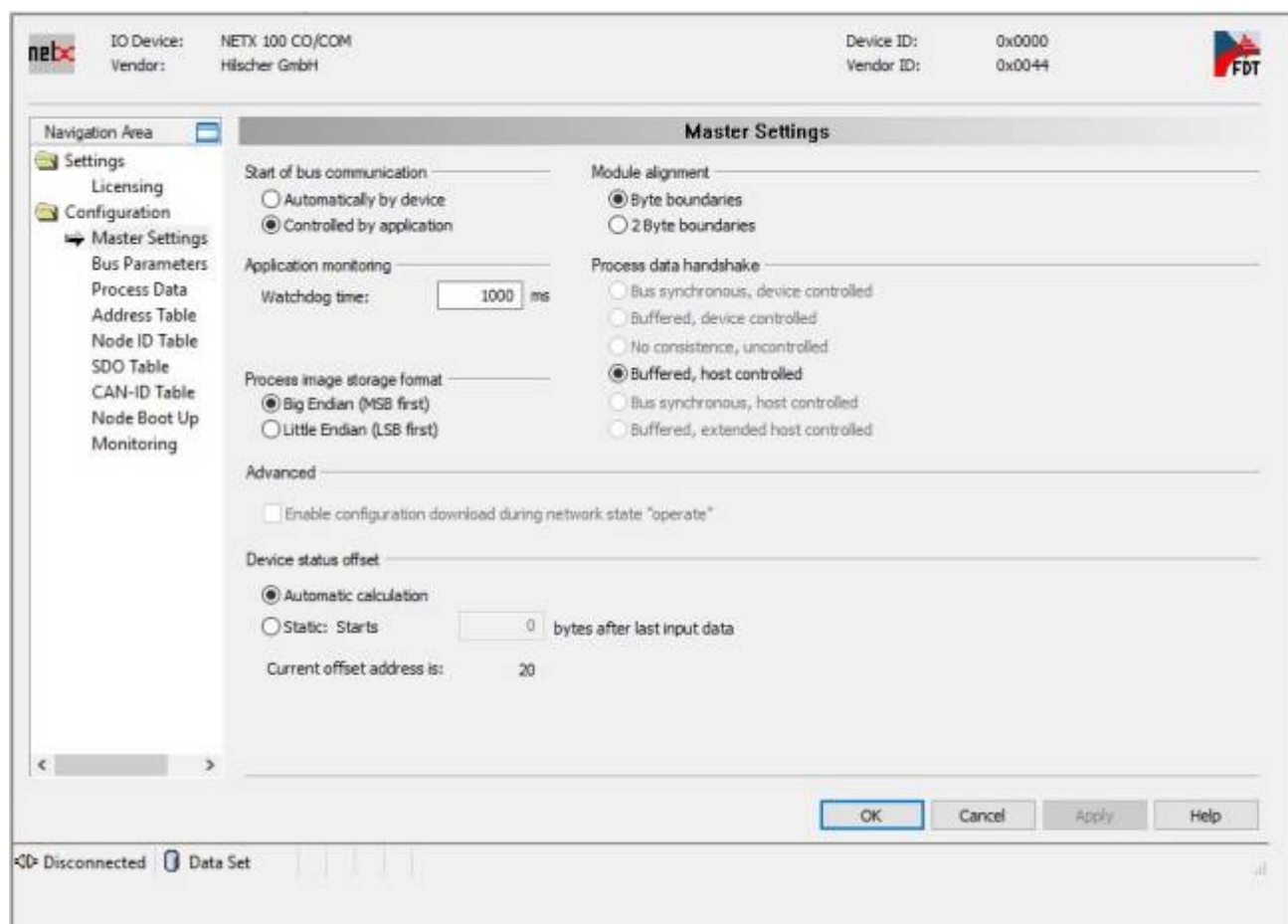
Ethernet/Powerlink Gateway



In order to control the integrated drive motor with Ethernet/Powerlink Master PLC, it is possible to use a standard Gateway solution.

The NLi motor must be updated with the Extended PDO Firmware. Please contact NiLAB for the right firmware.

Hilscher NETX 100 Ethernet/Powerlink to CanOPEN Gateway



netX IO Device: NETX 100 CO/COM Device ID: 0x0000
 Vendor: Hilscher GmbH Vendor ID: 0x0044

Navigation Area

- Settings
 - Licensing
- Configuration
 - Master Settings
 - Bus Parameters**
 - Process Data
 - Address Table
 - Node ID Table
 - SDO Table
 - CAN-ID Table
 - Node Boot Up
 - Monitoring

Bus Parameters

Device description: X20IF1041_1a

Node settings: Node ID: 1 SYNC Master Settings: COB-ID: 128
 Baud rate: 1 MBit/s Cycle Period: 32 ms

Stop in case of monitoring error
 Send "Global Start Node"

29 Bit COB-ID
 Enable 29 bit COB-ID

Acceptance mask: Bit 28... Bit 0: 00 00 00 00
 Acceptance code: 00 00 00 00

OK Cancel Apply Help

Disconnected Data Set

netX IO Device: NETX 100 CO/COM Device ID: 0x0000
 Vendor: Hilscher GmbH Vendor ID: 0x0044

Navigation Area

- Settings
 - Licensing
- Configuration
 - Master Settings
 - Bus Parameters
 - Process Data
 - Address Table**
 - Node ID Table
 - SDO Table
 - CAN-ID Table
 - Node Boot Up
 - Monitoring

Address Table

Display mode: Hexadecimal CSV Export

Node ID	Device	Name	Obj. Id	Obj. Name	COB-ID	Type	Length	Address
0x02	NU (NU_integrated NU (NU_integrated_motor_e	0x1800 TPDO communication param	0x1800	TPDO communication param	0x0182	IB	0x0008	0x0000
0x02	NU (NU_integrated NU (NU_integrated_motor_e	0x1801 TPDO communication param	0x1801	TPDO communication param	0x0282	IB	0x0008	0x0008
0x02	NU (NU_integrated NU (NU_integrated_motor_e	0x1802 TPDO communication param	0x1802	TPDO communication param	0x0382	IB	0x0004	0x0010

Node ID	Device	Name	Obj. Id	Obj. Name	COB-ID	Type	Length	Address
0x02	NU (NU_integrated NU (NU_integrated_motor_e	0x1400 RPDO communication param	0x1400	RPDO communication param	0x0202	QB	0x0008	0x0000
0x02	NU (NU_integrated NU (NU_integrated_motor_e	0x1401 RPDO communication param	0x1401	RPDO communication param	0x0302	QB	0x0008	0x0008
0x02	NU (NU_integrated NU (NU_integrated_motor_e	0x1402 RPDO communication param	0x1402	RPDO communication param	0x0402	QB	0x0004	0x0010

OK Cancel Apply Help

Disconnected Data Set

From:

<https://dokuwiki.nilab.at/> - **NiLAB GmbH**
Knowledgebase

Permanent link:

https://dokuwiki.nilab.at/doku.php?id=integrated_drive_motors:powerlink_gateway

Last update: **2026/02/24 15:45**

