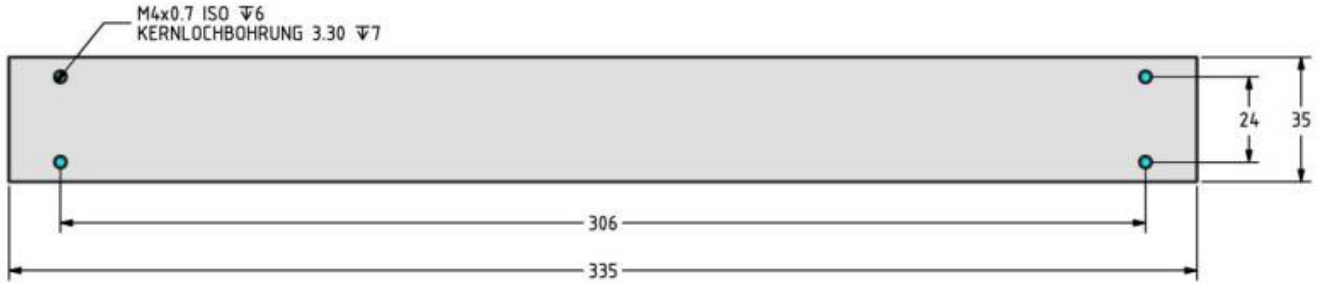
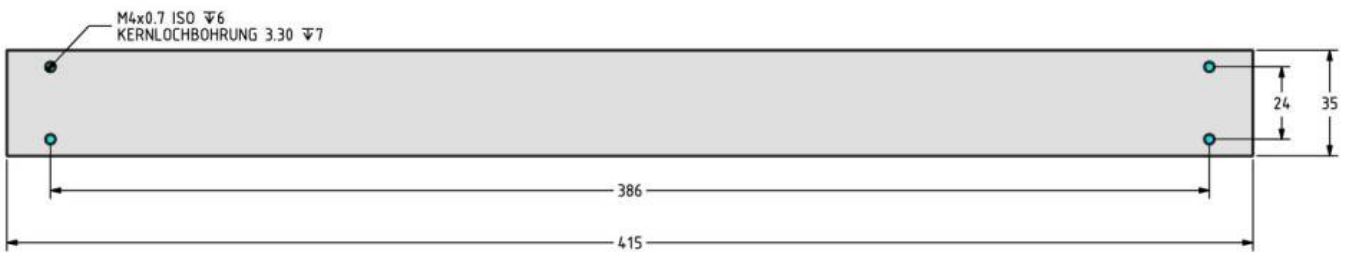


# Installation

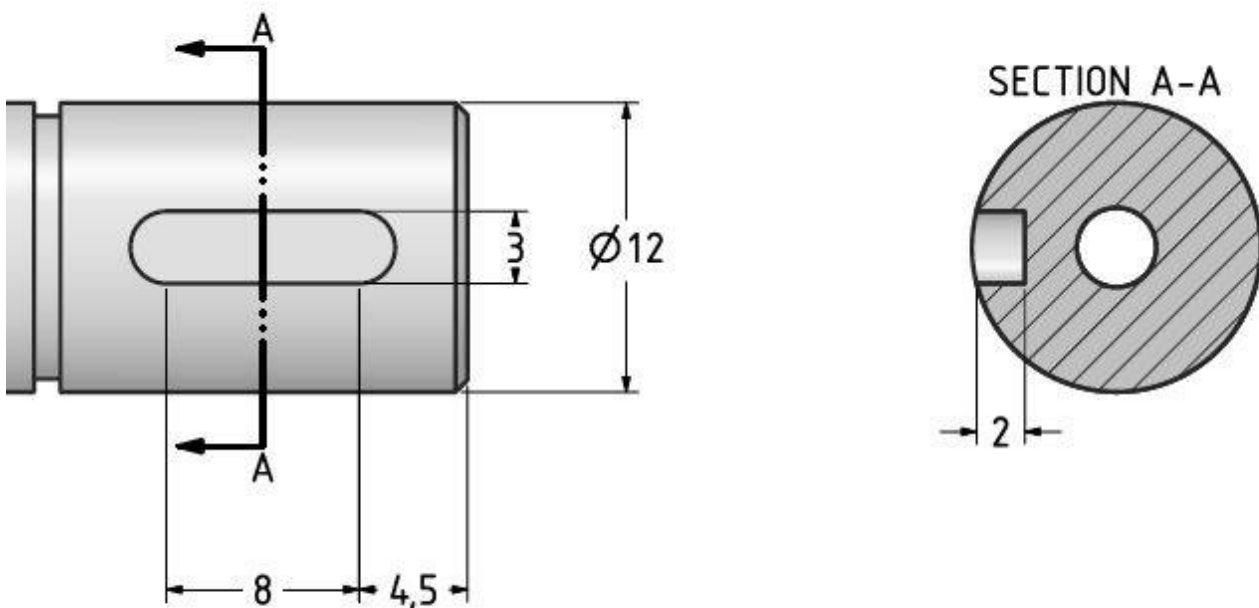
## NLiR120Q-100-1 Fixing points



## NLiR120Q-100-2 Fixing points



## Load coupling on the rotary side



From:

<https://dokuwiki.nilab.at/> - **NiLAB GmbH**  
**Knowledgebase**

Permanent link:

[https://dokuwiki.nilab.at/doku.php?id=integrated\\_rotolinear:installation](https://dokuwiki.nilab.at/doku.php?id=integrated_rotolinear:installation)

Last update: **2024/09/23 08:20**

