

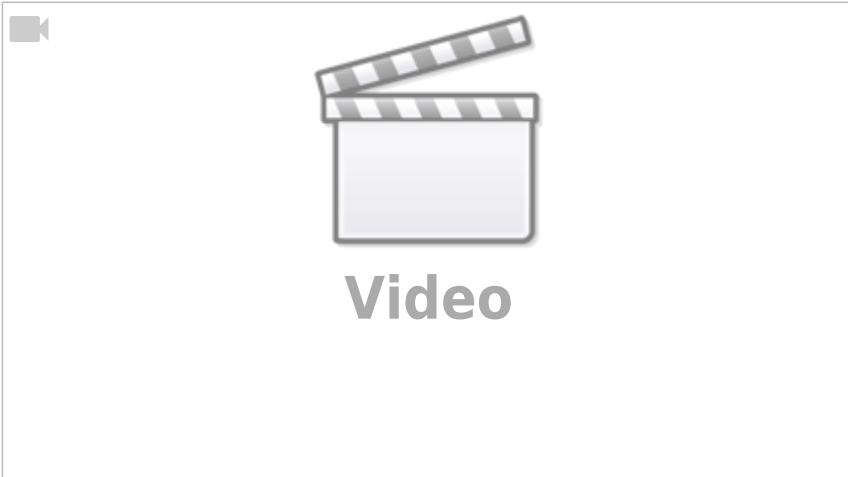
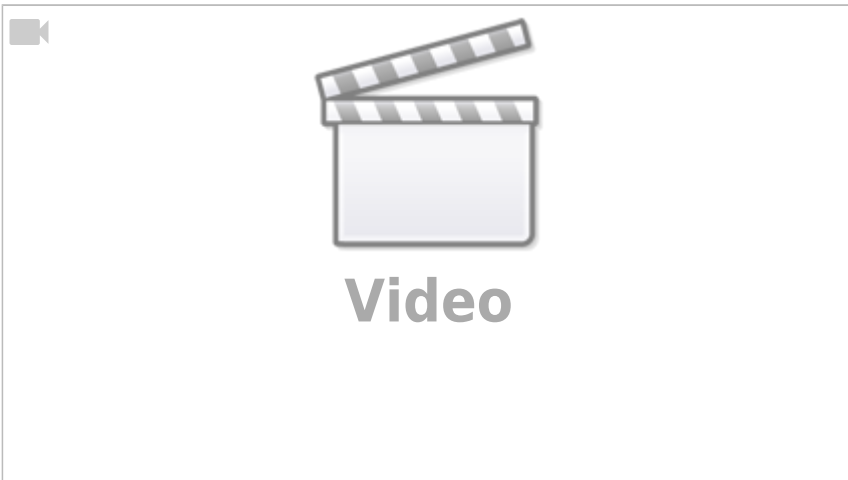
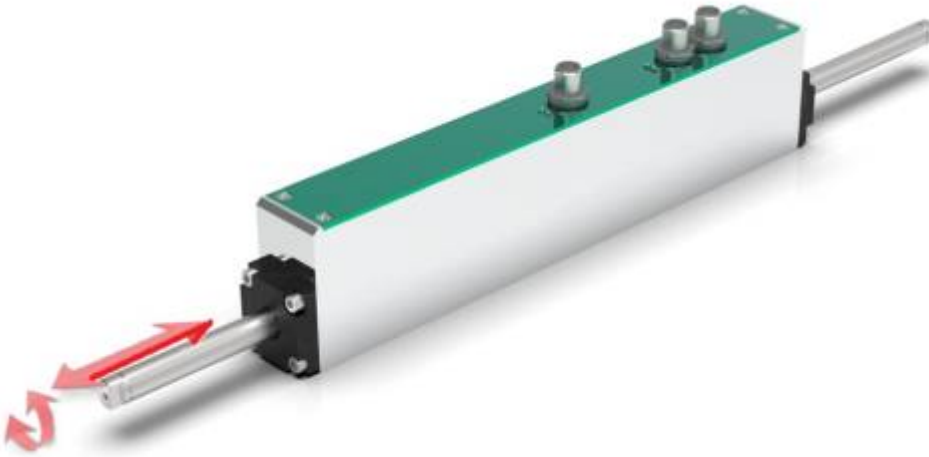
# NLiR Integrated Rotolinear motors

## Integrated miniature rotolinear motor NLiR120Q/X

The Rotolinear NLiR integrates in one mechanical arrangement a miniature integrated drive linear motor and a coreless integrated drive brushless rotary motor. With this combination of technologies, you can create rotation combined with linear movements.



Each of these motors can be controlled separately and in interpolation to realise applications such as capping and Pick & Place with rotation using integrated positioning table or by CanOPEN fieldbus.



From:  
<https://dokuwiki.nilab.at/> - NiLAB GmbH  
**Knowledgebase**

Permanent link:  
[https://dokuwiki.nilab.at/doku.php?id=integrated\\_rotolinear:start](https://dokuwiki.nilab.at/doku.php?id=integrated_rotolinear:start)

Last update: **2025/08/23 08:58**

