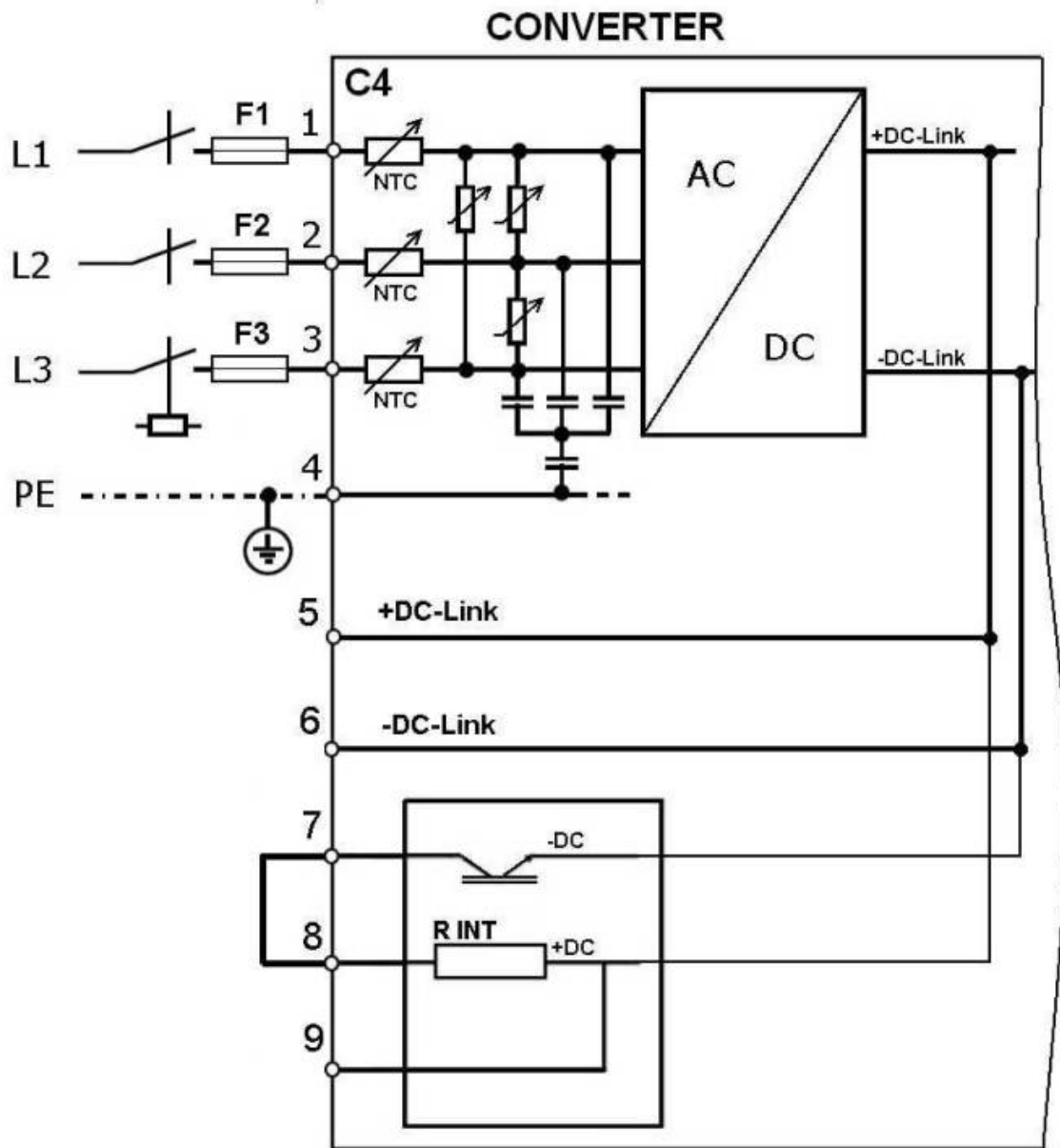


# Connection to 3-phases Mains Supply Networks

## Connection with 3x400 VAC power lines

The connection of the main electrical supply is made via the C4 connector. The servo amplifier must be powered only by a 3-phase grounded current in the range 230V-10%, 400 +10% and 50/60Hz frequency.

C4 CONNECTOR		
PIN	NAME	DESCRIPTION
1	L1	Power Line 1
2	L2	Power Line 2
3	L3	Power Line 3
4	PE	Protective Earth
5	+AT	+DC-link
6	-AT	-DC-link
7	R COM	Braking resistor common pole
8	R INT	Internal braking resistor connection, jumper between pin 7 and 8. (default)
9	R EXT	External braking resistor connection, connect the resistor to the pin 7 and 9

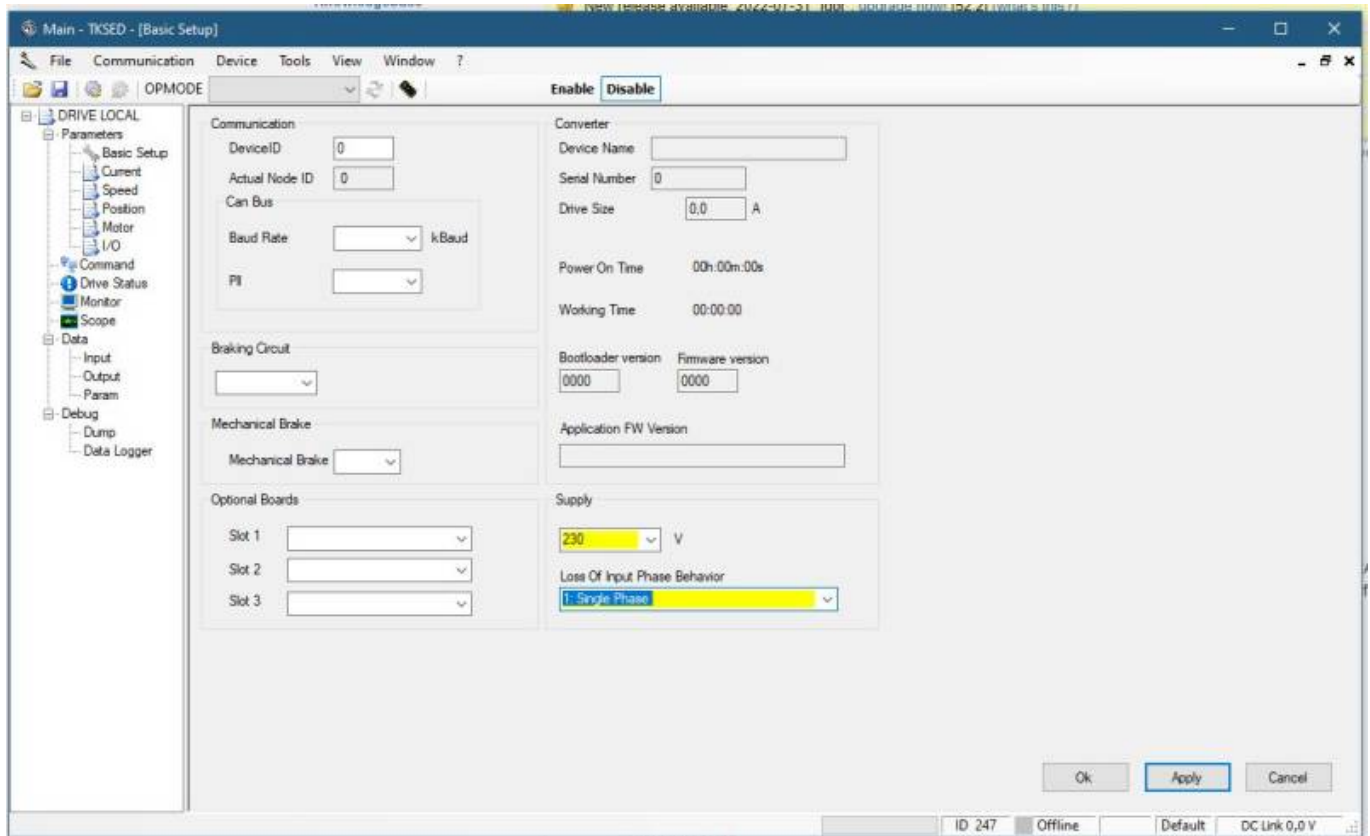


## Connection with 230VAC single phase powerline

Please note that if you would like to use with monophase 230VAC power lines you have to connect L1, L2 and PE.

Respectively, **L1 (phase)**, **L2 (neutral)** and **L3 (Protection earth)**.

Then set the right Supply values on the Basic Setup window of TKSED software.



From:  
<https://dokuwiki.nilab.at/> - **NiLAB GmbH**  
**Knowledgebase**

Permanent link:  
[https://dokuwiki.nilab.at/doku.php?id=mbd\\_servo\\_drive:main\\_supply](https://dokuwiki.nilab.at/doku.php?id=mbd_servo_drive:main_supply)

Last update: **2023/09/21 07:16**

