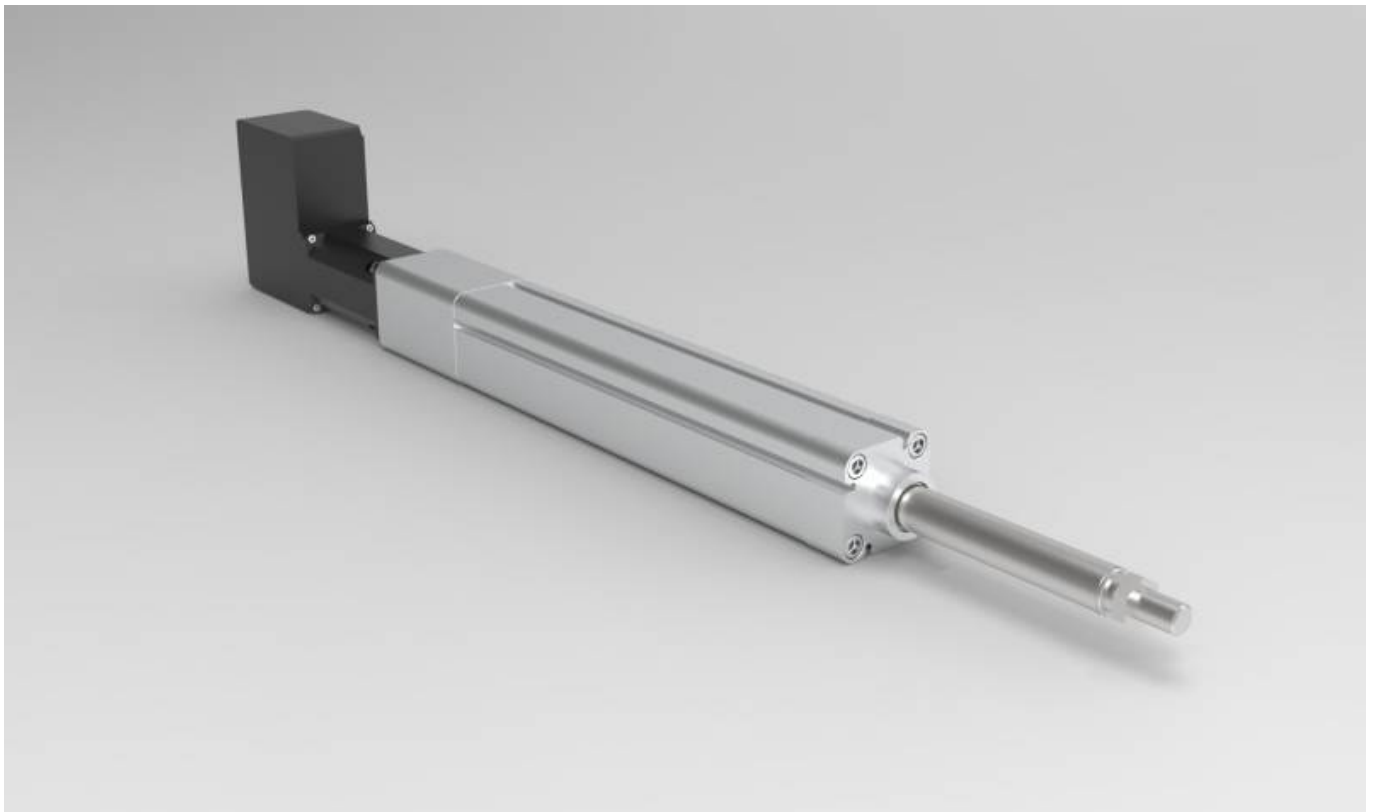


# Mechanical construction



Standard: ISO 15552, Ball screw lead: 5, 10, 20 mm. The output screw is M16x1.5mm.

<b>Ballscrew actuator sizes</b>	50, 63
<b>Standard</b>	ISO15552
<b>Repeatability (mm)</b>	±0.02
<b>Ball screw lead (mm)</b>	5, 10, 20
<b>Ball screw</b>	50: C7ø16 63: C7ø20
<b>Stroke (mm)</b>	50: 100~600/50 pitch 63: 100~800/50 pitch
<b>Antirotation accuracy</b>	±0.4 degrees
<b>Max speed (mm/s)</b>	250~1000
<b>Rated thrust (N)</b>	390~3000

From:

<https://dokuwiki.nilab.at/> - NiLAB GmbH  
Knowledgebase

Permanent link:

[https://dokuwiki.nilab.at/doku.php?id=motolab\\_actuator:mechanics](https://dokuwiki.nilab.at/doku.php?id=motolab_actuator:mechanics)

Last update: 2026/01/08 15:51

