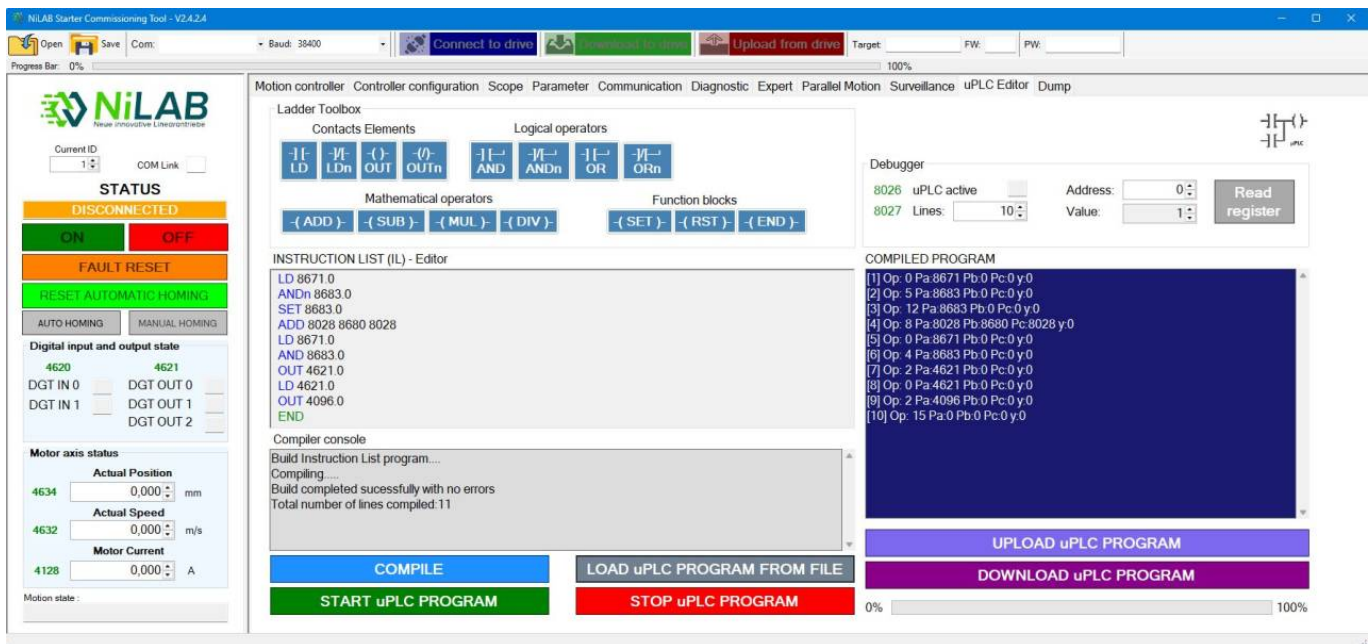


# uPLC Editor

NiLAB Starter offers a Instruction List editor for programming the internal uPLC of NLI integrated linear motors.

The user can create the PLC program using the editor selecting from the Toolbox different functions, write the code by hand or loading the code from file.



The IL compiler check for syntax and logical error and then compiled the program for the internal PLC. After the building phase the user must download the program into the motor using the DONWLOAD button.

With the debugger area the user can read the value form the internal PLC registers to verify that the program is running correct.

From:

<https://dokuwiki.nilab.at/> - **NiLAB GmbH**  
**Knowledgebase**

Permanent link:

[https://dokuwiki.nilab.at/doku.php?id=nilab\\_starter:uplc\\_editor](https://dokuwiki.nilab.at/doku.php?id=nilab_starter:uplc_editor)

Last update: **2025/11/04 11:00**

